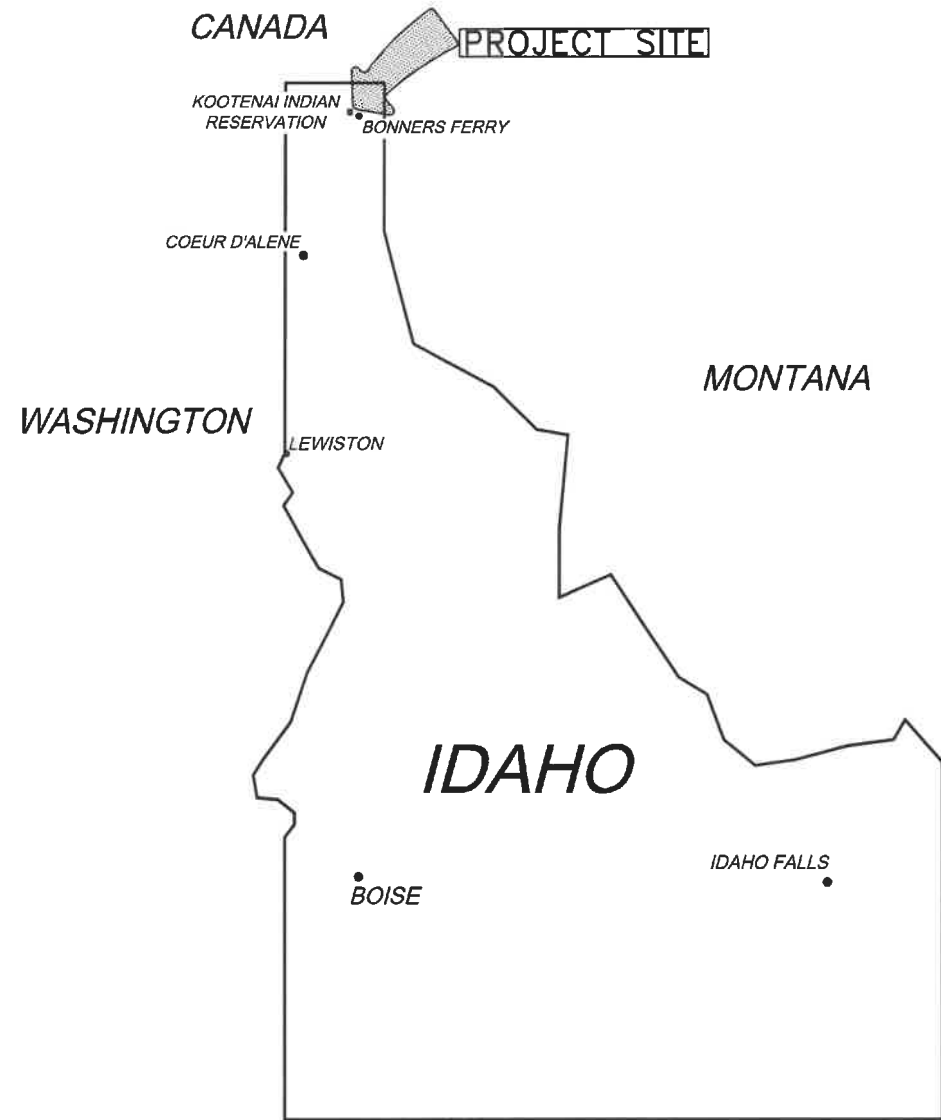


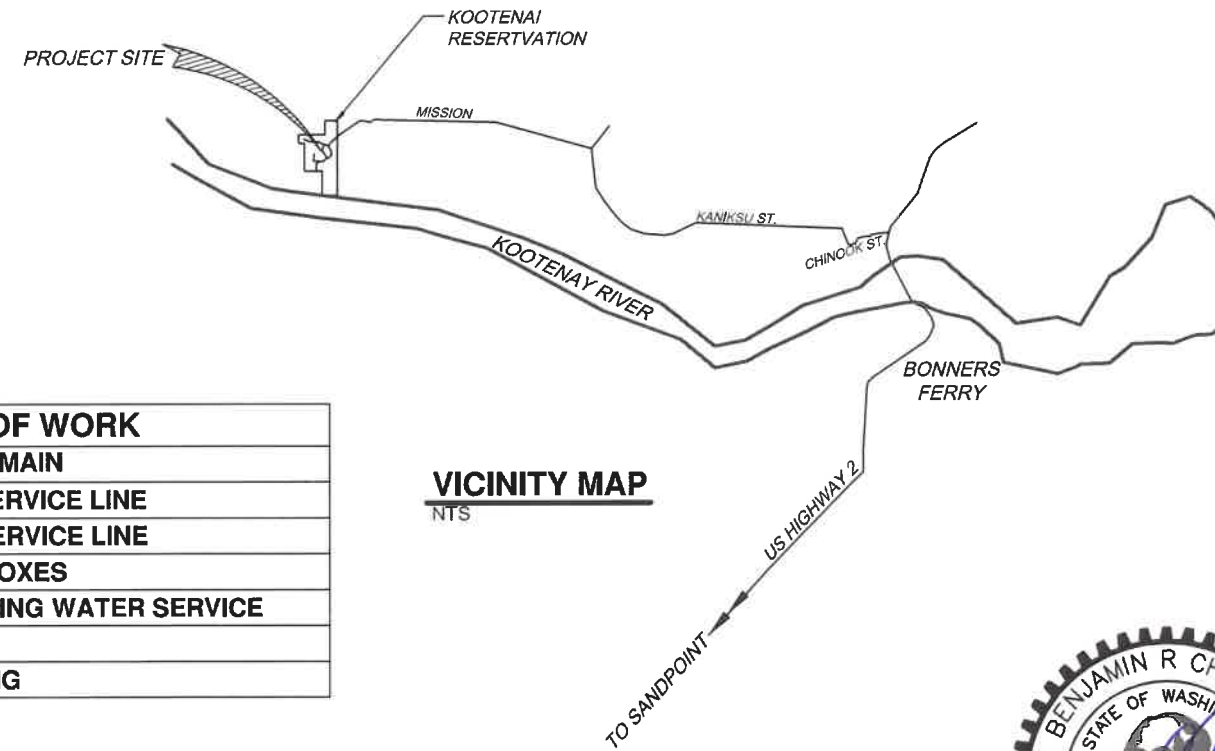
USER: XPullin FILE: K:\CAD Center\H-KOOTENAI PROJECT DRAWINGS\21-N04 - Kootenai Water Loop\1-Plans_Design\21-N04 Kootenai WL(FINAL).dwg 2/27/2024 - 9:23am

SANITATION FACILITIES CONSTRUCTION PUBLIC LAW 86-121 I.H.S. KOOTENAI COMMUNITY WATERMAIN LOOP FOR THE KOOTENAI INDIAN RESERVATION - BONNERS FERRY, IDAHO PROJECT NO. PO-21-N04



SHEET INDEX	
SHT.#	DESCRIPTION
1	COVER SHEET & PROJECT LOCATION MAP
2	GENERAL NOTES, LEGEND & CONTACT INFORMATION
3	WATERMAIN LOOP - CONSTRUCTION SITE PLAN
4	WATERMAIN LINE A - STA 0+00 TO STA 4+23
5	WATERMAIN LINE B - STA 0+00 TO STA 8+24
6	MISCELLANEOUS CONNECTION DETAILS
7	STANDARD DETAILS - SHEET 1
8	STANDARD DETAILS - SHEET 2

SCOPE OF WORK
1,247 FEET OF 6" WATERMAIN
15 FEET OF 2" WATER SERVICE LINE
55 FEET OF 1" WATER SERVICE LINE
4 - 6" GATE VALVES w/ BOXES
CONNECTIONS TO EXISTING WATER SERVICE
PIPE ABANDONMENT
PAVEMENT RESURFACING



EXPIRES 03/25/2025

DATE	REVISIONS	INIT.

PORTLAND AREA
OFFICE OF ENVIRONMENTAL
HEALTH & ENGINEERING

SANITATION FACILITIES CONSTRUCTION
528 E. SPOKANE FALLS BLVD., SUITE 302
SPOKANE, WA 99201
(509) 455-3525



COVER SHEET & PROJECT LOCATION MAP
KOOTENAI INDIAN RESERVATION - BONNERS FERRY, IDAHO
KOOTENAI COMMUNITY WATERMAIN LOOP
PUBLIC LAW 86-121
PO-21-N04

DRAWN BY: RK PULLIN (02/27/24) FILE NAME: 21-N04 KOOTENAI WL(FINAL)
CHECKED BY: J DEPASION LAYOUT NAME: 21-N04_CVR_SHT
APPROVED BY: B. CHADWICK PROJ ENG: SCALE: NONE

SHEET
1 OF 8

GENERAL NOTES

1. THE UTILITIES SHOWN IN PLAN AND PROFILE ARE INDICATED IN ACCORDANCE WITH AVAILABLE RECORDS. (ALL UTILITIES MAY NOT BE SHOWN.) THE CONTRACTOR SHALL BE RESPONSIBLE FOR OBTAINING EXACT LOCATIONS AND ELEVATIONS OF ALL UTILITIES FROM THE OWNERS OF RESPECTIVE UTILITIES. ALL UTILITIES SHALL BE NOTIFIED AT LEAST 72 HOURS PRIOR TO EXCAVATION. POTHOLING WILL BE REQUIRED PRIOR TO INSTALLING THE WATERMAIN.
2. ALL MINOR OBSTRUCTIONS MAY NOT BE SHOWN ON PLANS. THE CONTRACTOR SHALL VISIT THE SITE AND DETERMINE THE ACTUAL CONDITIONS WITH REGARD TO THE EXISTENCE OF FENCES, DRIVEWAYS, TREES, SIDEWALKS, CULVERTS, UTILITIES AND OTHER MISCELLANEOUS OBSTACLES THAT MAY INTERFERE WITH CONSTRUCTION PRIOR TO SUBMITTING BIDS.
3. CONTRACTOR SHALL MINIMIZE DISRUPTION TO WATER SERVICE. ALL WATER SYSTEM OUTAGES SHALL BE COORDINATED WITH THE OWNER 48 HOURS PRIOR TO EACH OCCURENCE.
4. WATER SERVICES SHALL BE RUN TO PROPERTY LINE AS SHOWN OR AS LOCATED IN THE FIELD. EXCEPT WHERE NOTED, WATER SERVICE LINES SHALL BE 1" OR 2" P.E. AS NOTED.
5. COMPACTION REQUIREMENTS FOR MAINS & SERVICE LINES INSTALLED IN THE PROPOSED ROADWAY MUST MEET ROAD RESTORATION REQUIREMENTS.
6. CLEARING & GRUBBING MAY BE REQUIRED. FIELD VERIFY.
7. PROTECT OR RESTORE ALL LOT CORNERS.
8. SYMBOLS ON THE DRAWINGS (BECAUSE OF THEIR SIZE) MAY NOT REPRESENT THE EXACT LOCATION OF EITHER PROPOSED OR EXISTING UTILITIES. (EX. GATE VALVES & HYDRANTS)

UTILITIES

TELECOMMUNICATIONS:
ZIPLY FIBER
(866)-699-4759

GAS:
AVISTA UTILITIES
(800)-227-9187

POWER:
CITY OF BONNERS FERRY
(208)-267-3105

PUBLIC WORKS DIRECTOR:
THERESA WHEAT
(208)-267-3519

CONTACTS

ENGINEERING:

INDIAN HEALTH SERVICE
528 E SPOKANE FALLS BLVD
SUITE 302
SPOKANE, WA 99202
BEN CHADWICK, P.E.
TELE: (503)-414-7772

CONTACT PUBLIC WORKS:

JAMIE PORTER
(208)-691-6736

BRANDON NEWMAN
(208)-597-4962

ALL WORK TO CONFORM WITH OSHA
STANDARDS 29 CFR PART 1926

OSHA REGION 10
1111 THIRD AVENUE, SUITE 715
SEATTLE, WASHINGTON 98101-3212
PHONE (206) 553-5930 FAX (206) 553-6499
EMERGENCY 1-800-321-OSHA

SYMBOL LEGEND

<p>Ⓜ UNDERGROUND POWER PEDESTAL</p> <p>Ⓣ UNDERGROUND TELEPHONE PEDESTAL</p> <p>⊕ FIRE HYDRANT</p> <p>⊗ WATER VALVE</p> <p>Ⓜ WATER MANHOLE</p> <p>Ⓜ WELL</p> <p>Ⓜ WATER METER</p> <p>Ⓜ POWER POLE</p> <p>→ GUY ANCHOR</p>	<p>⊕ FROST FREE YARD HYDRANT</p> <p>Ⓜ DRYWELL</p> <p>Ⓜ STORM DRAIN CATCH BASIN</p> <p>Ⓜ SANITARY SEWER MANHOLE</p> <p>Ⓜ SANITARY SEWER STUB</p> <p>— SIGN</p> <p>Ⓜ MAILBOX</p> <p>• BOL. BOLLARD</p> <p>DF INDIVIDUAL DRAINFIELD FOR SANITARY SEWER APPROXIMATE LOCATION</p>	<p>Ⓜ ELECTRIC METER</p> <p>Ⓜ SATELITE DISH</p> <p>Ⓜ VAULT</p> <p>Ⓜ CONIFER TREE</p> <p>Ⓜ DECIDUOUS TREE</p> <p>CC CURB CUT</p> <p>oc.o. SANITARY SEWER CLEANOUT</p> <p>Ⓜ SHRUB</p> <p>Ⓜ GAS METER</p>
--	--	---

LINETYPE LEGEND

<p>——— EDGE OF PAVEMENT</p> <p>——— BUILDING LINE</p> <p>—•—•— FENCE</p> <p>——— EDGE OF GRAVEL</p> <p>——— ROAD</p> <p>——— G — GAS LINE</p> <p>——— S — SEWER LINE</p> <p>——— SD — STORM DRAIN LINE</p> <p>——— W — EXISTING WATERMAIN</p> <p>—— WSL — WSL — WSL — WATER SERVICE LINE</p>	<p>——— EDGE OF WATER</p> <p>——— FM — FORCE MAIN SANITARY SEWER</p> <p>——— UP — UNDERGROUND POWER</p>
---	--



Know what's below.
Call before you dig.



EXPIRES 03/25/2025

DATE	INIT.	REVISIONS

PORTLAND AREA
OFFICE OF ENVIRONMENTAL
HEALTH & ENGINEERING

SANITATION FACILITIES CONSTRUCTION
528 E. SPOKANE FALLS BLVD., SUITE#302
SPOKANE, WA 99201
(509) 455-5525



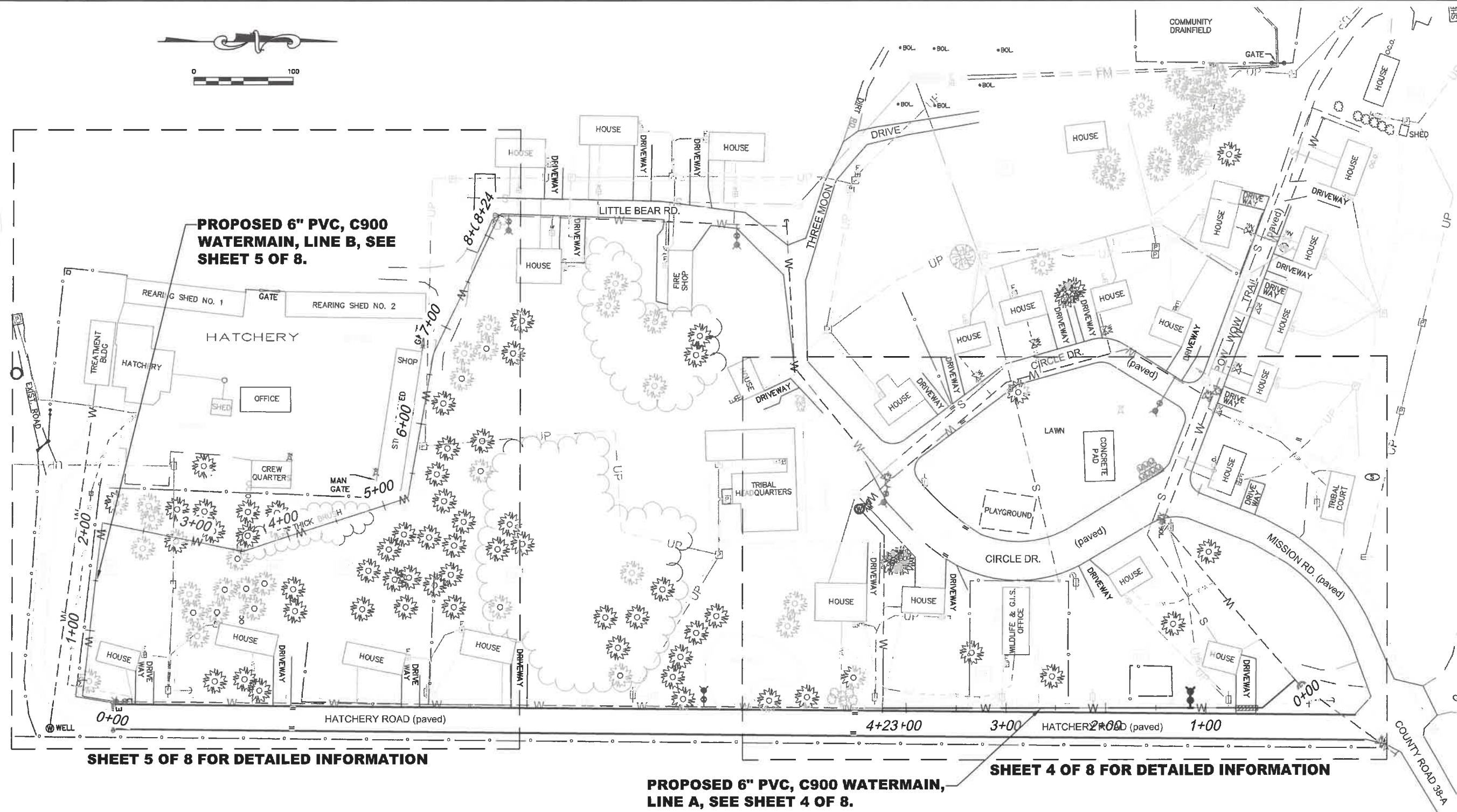
GENERAL NOTES, LEGENDS & CONTACT INFORMATION
KOOTENAI INDIAN RESERVATION - BONNERS FERRY, IDAHO
KOOTENAI COMMUNITY WATERMAIN LOOP
PUBLIC LAW 86-121
PO-21-N04

FILE NAME: 21-N04 KOOTENAI WL(FINAL)
LAYOUT NAME: 21-N04_NOTES&LEGEND
DRAWN BY: RK PULLIN (02/27/24)
CHECKED BY: J DePASION
APPROVED BY: B CHADWICK

SCALE: NONE

USER: K:\CAD Center\H-KOOTENAI PROJECT DRAWINGS\21-N04 - Kootenai Water Loop\1-Plans_Design\21-N04 Kootenai WL(FINAL).dwg 2/27/2024 - 9:28am

KOOTENAI RIVER



WATERMAIN LOOP - CONSTRUCTION SITE PLAN

SCALE 1" = 100'



EXPIRES 03/25/2025

DATE	REVISIONS	INIT.

**PORTLAND AREA
OFFICE OF ENVIRONMENTAL
HEALTH & ENGINEERING**

SANITATION FACILITIES CONSTRUCTION
528 E. SPOKANE FALLS BLVD., SUITE#302
SPOKANE, WA 99201
(509) 455-3525

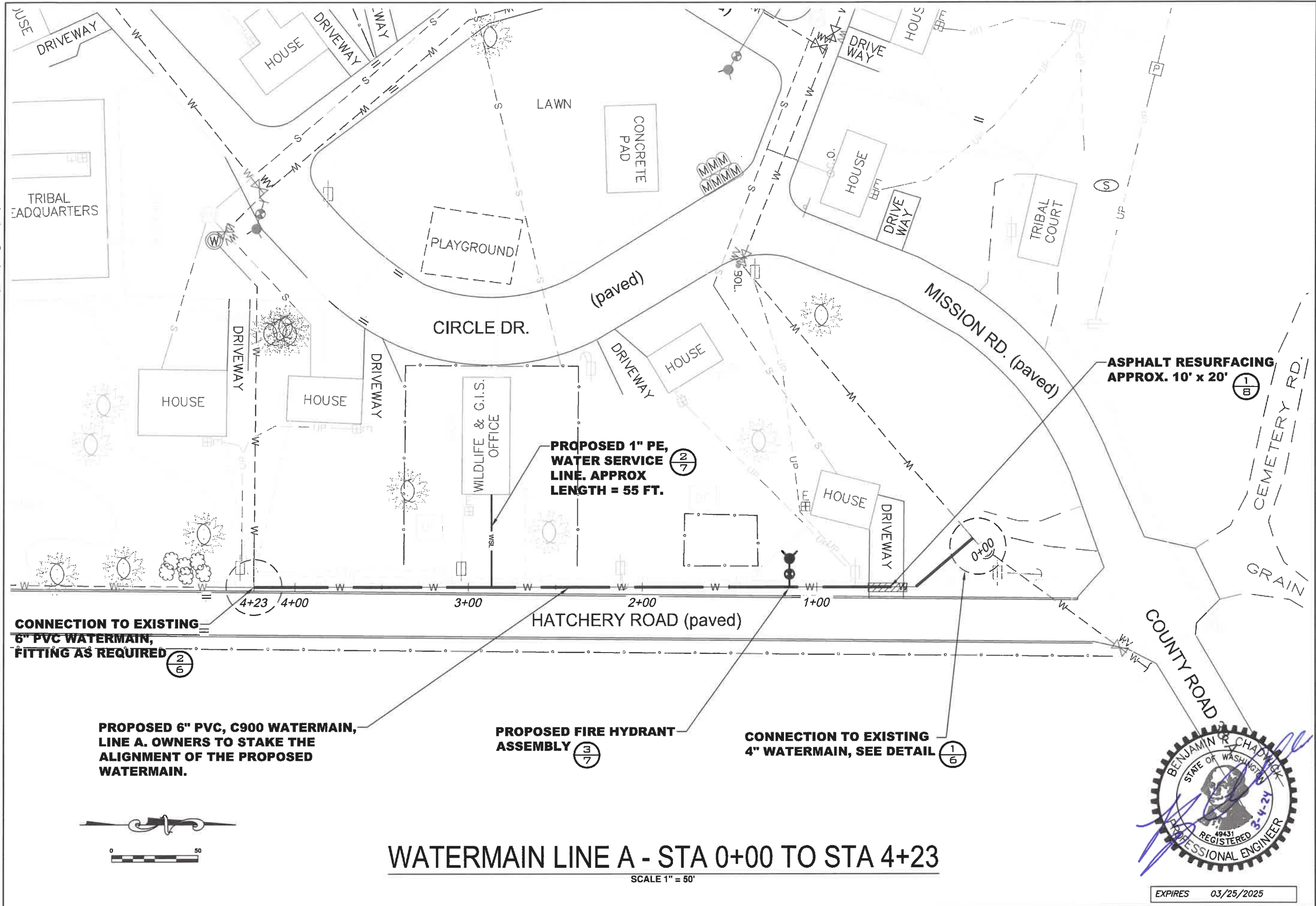


WATERMAIN LOOP - CONSTRUCTION SITE PLAN
KOOTENAI INDIAN RESERVATION - BONNERS FERRY, IDAHO
KOOTENAI COMMUNITY WATERMAIN LOOP
PUBLIC LAW 86-121
PO-21-N04

FILE NAME: 21-N04 KOOTENAI WL(FINAL)
LAYOUT NAME: 21-N04 SITE PLAN
SCALE: AS SHOWN

DRAWN BY: RK PULLIN (02/27/24)
CHECKED BY: J DePASION
APPROVED BY: B CHADWICK

USER: K:\CAD Center\H-KOOTENAI PROJECT DRAWINGS\21-N04 - Kootenai Water Loop\1-Plans_Design\21-N04 Kootenai WL(FINAL).dwg 2/27/2024 - 9:28am



WATERMAIN LINE A - STA 0+00 TO STA 4+23
SCALE 1" = 50'



DATE	REVISIONS	INIT.

PORTLAND AREA
OFFICE OF ENVIRONMENTAL
HEALTH & ENGINEERING

SANITATION FACILITIES CONSTRUCTION
528 E. SPOKANE FALLS BLVD., SUITE #302
SPOKANE, WA 99201
(509) 455-3525



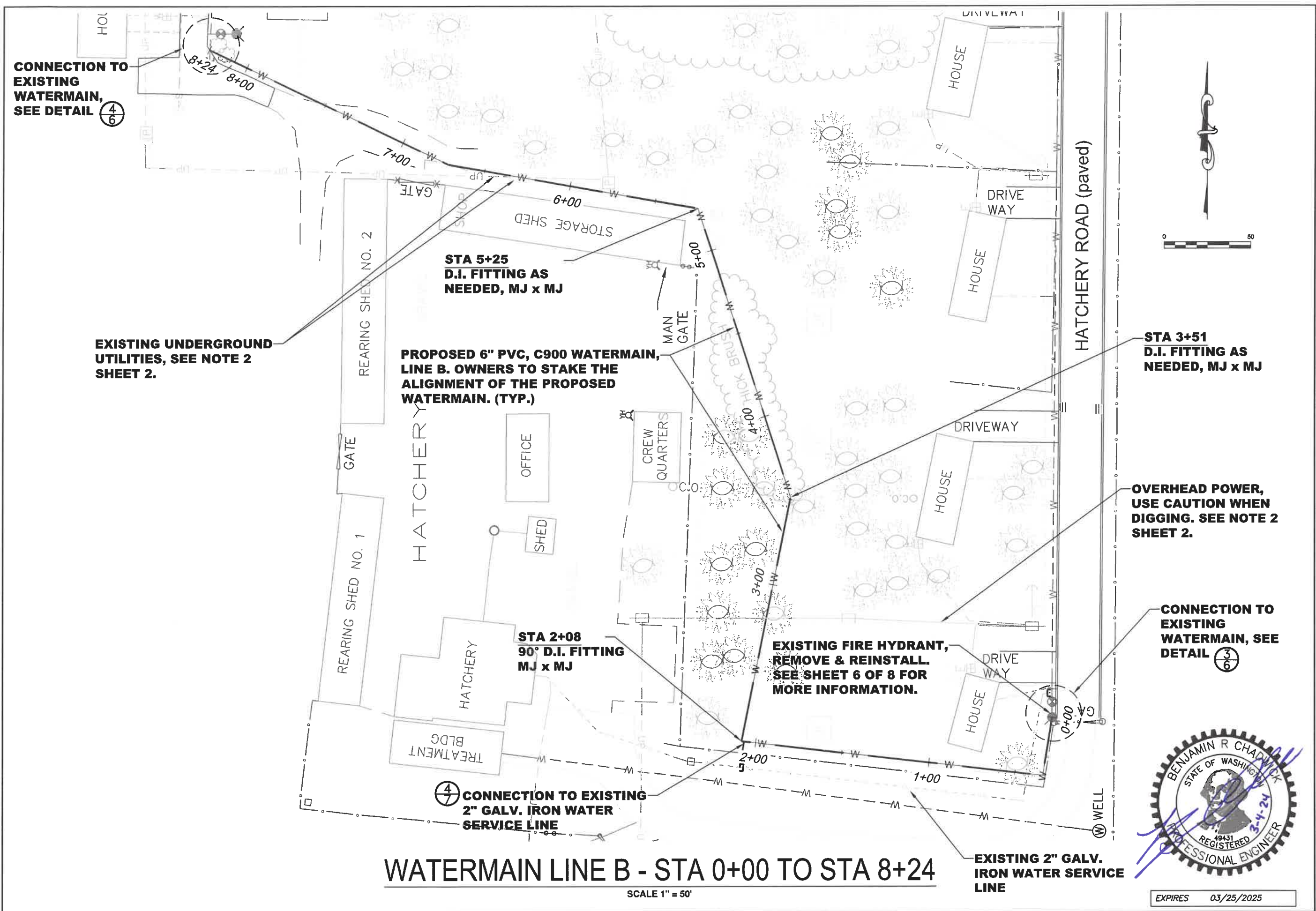
WATERMAIN LINE A - STA 0+00 TO STA 4+23
KOOTENAI INDIAN RESERVATION - BONNERS FERRY, IDAHO
KOOTENAI COMMUNITY WATERMAIN LOOP
PUBLIC LAW 86-121
PO-21-N04

FILE NAME: 21-N04 KOOTENAI WL(FINAL)
LAYOUT NAME: 21-N04.LIN.A
PROJ ENG: SCALE: AS SHOWN

DRAWN BY: RK PULLIN (02/27/24)
CHECKED BY: J DEPASION
APPROVED BY: B CHADWICK

EXPIRES 03/25/2025

USER: KPullin FILE: K:\CAD Center\H-KOOTENAI PROJECT DRAWINGS\21-N04 - Kootenai Water Loop\1-Plans_Design\21-N04 Kootenai WL(FINAL).dwg 2/27/2024 - 9:26am



WATERMAIN LINE B - STA 0+00 TO STA 8+24

SCALE 1" = 50'

EXPIRES 03/25/2025



DATE	REVISIONS	INIT.

PORTLAND AREA
OFFICE OF ENVIRONMENTAL
HEALTH & ENGINEERING

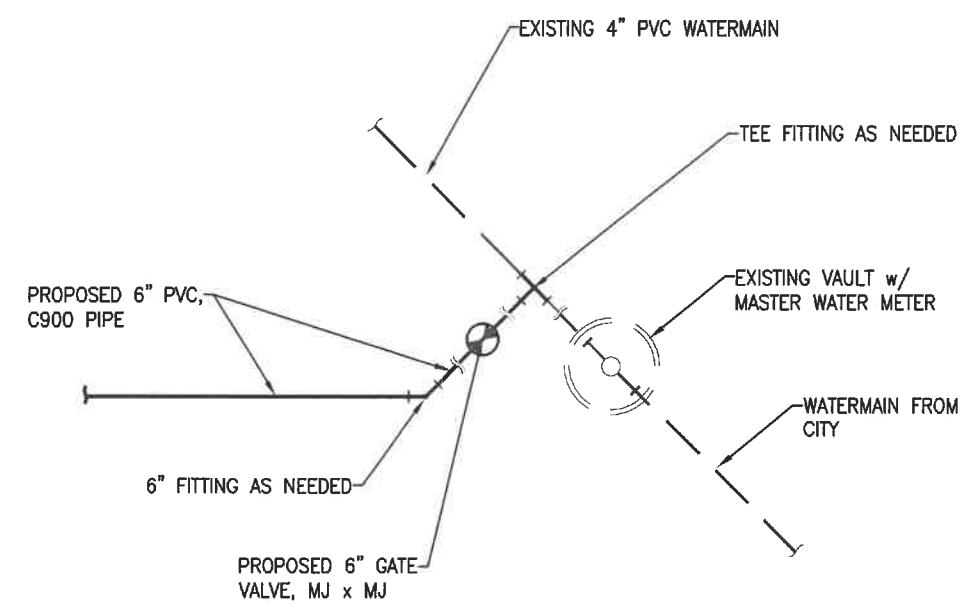
SANITATION FACILITIES CONSTRUCTION
528 E. SPOKANE FALLS BLVD., SUITE#302
SPOKANE, WA 99201
(509) 455-3525



WATERMAIN LINE B - STA 0+00 TO STA 8+24
KOOTENAI INDIAN RESERVATION - BONNERS FERRY, IDAHO
KOOTENAI COMMUNITY WATERMAIN LOOP
PUBLIC LAW 86-121
PO-21-N04

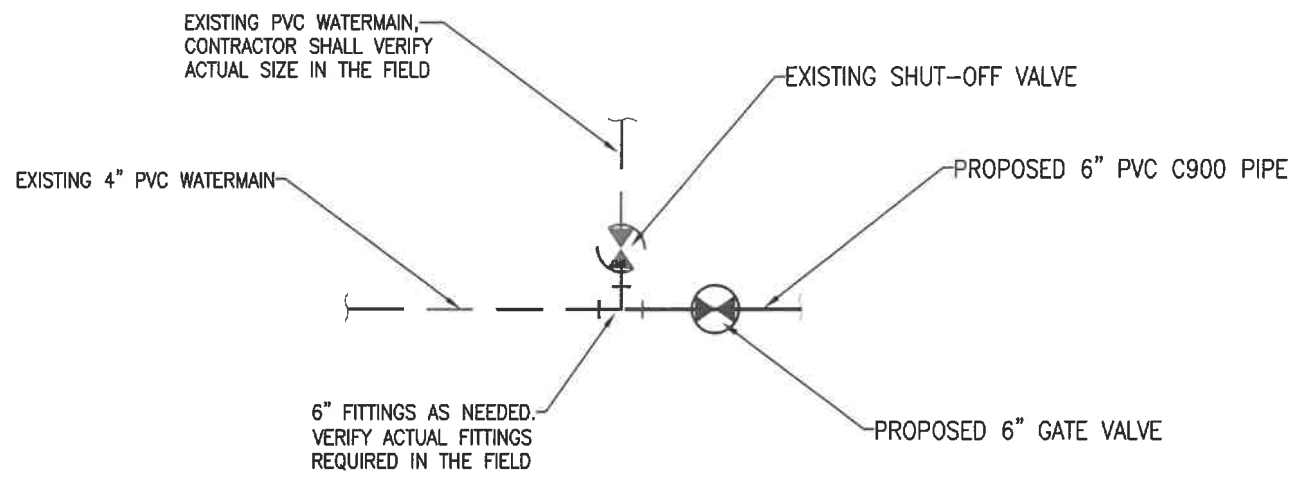
DRAWN BY: RK PULLIN (02/27/24) FILE NAME: 21-N04 KOOTENAI WL(FINAL)
CHECKED BY: J DEPASION LAYOUT NAME: 21-N04_LINE B
APPROVED BY: B CHADWICK PROJ ENG: SCALE: AS SHOWN

USER: K\Pullin FILE: K:\CAD Center\H-KOOTENAI PROJECT DRAWINGS\21-N04 - Kootenai Water Loop - Kootenai Water Loop\1-Plans_Design\21-N04 Kootenai WL(FINAL).dwg 2/27/2024 - 9:27am



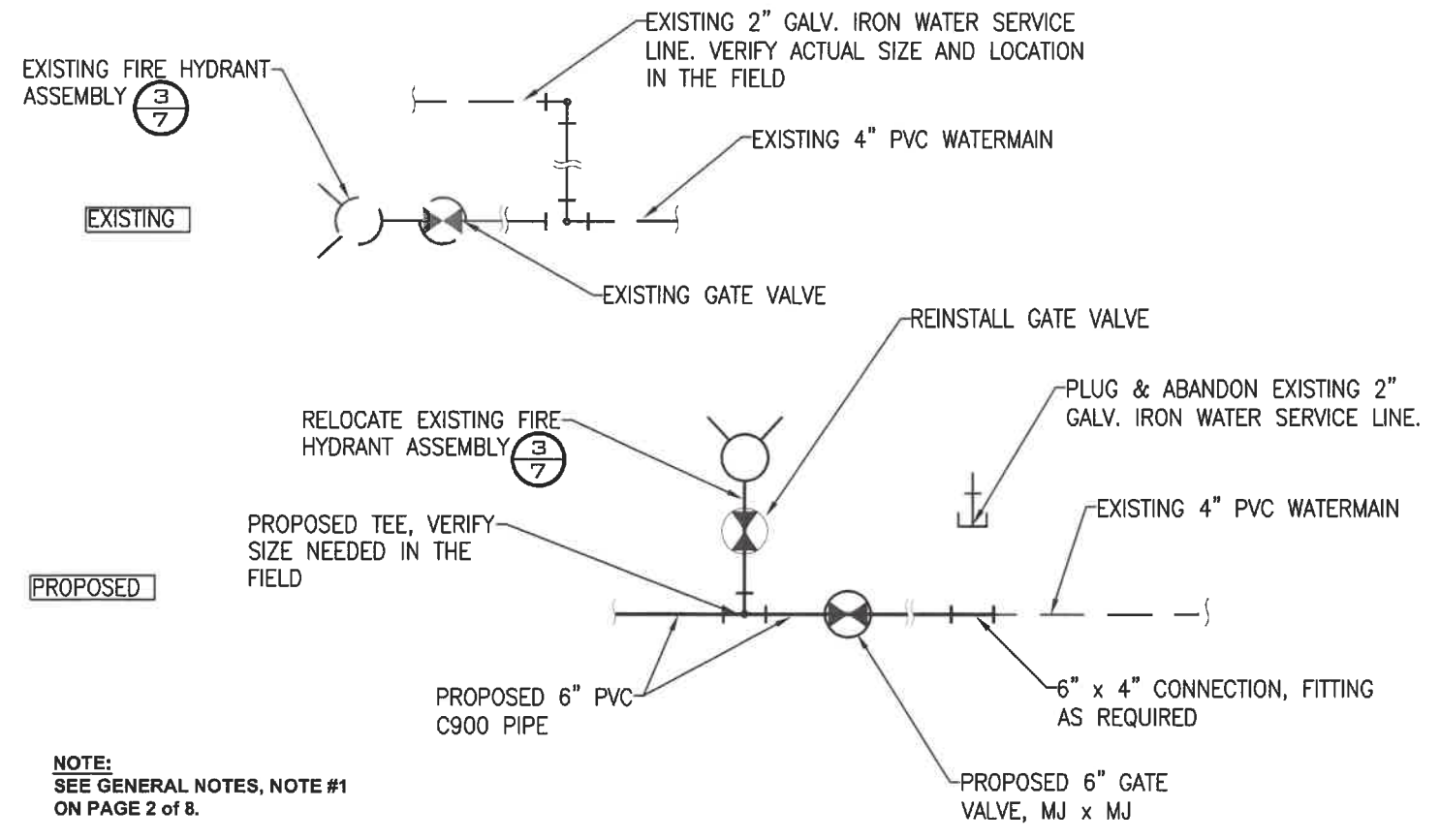
1/6 CONNECTION DETAIL "A1"
N.T.S.

NOTE:
SEE GENERAL NOTES, NOTE #1
ON PAGE 2 of 8.



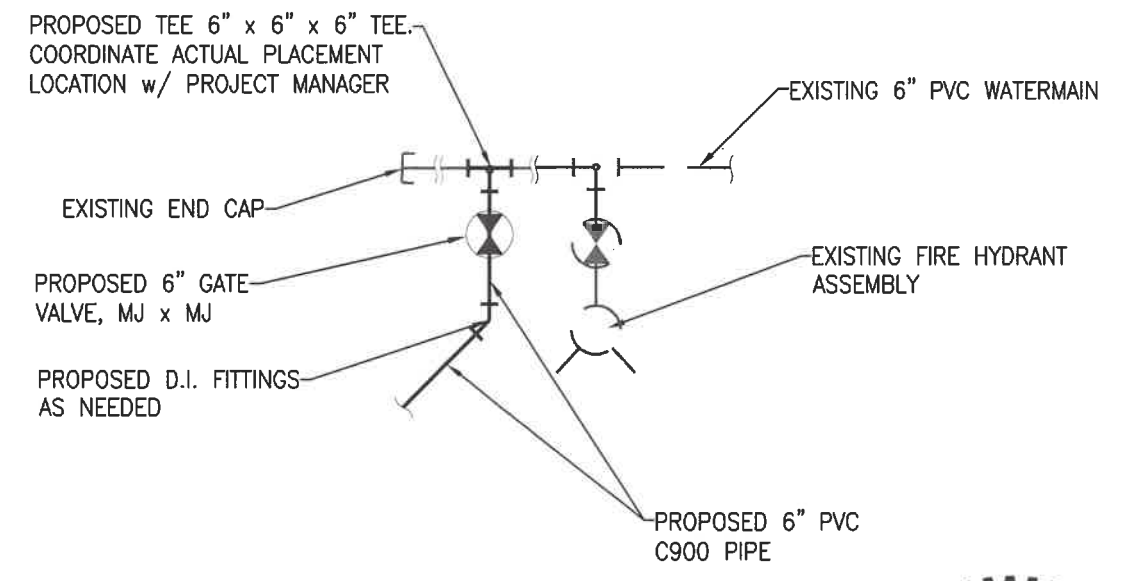
2/6 CONNECTION DETAIL "A2"
N.T.S.

NOTE:
SEE GENERAL NOTES, NOTE #1
ON PAGE 2 of 8.



3/6 CONNECTION DETAIL "B1"
N.T.S.

NOTE:
SEE GENERAL NOTES, NOTE #1
ON PAGE 2 of 8.



4/6 CONNECTION DETAIL "B2"
N.T.S.

NOTE:
SEE GENERAL NOTES, NOTE #1
ON PAGE 2 of 8.



EXPIRES 03/25/2025

DATE	REVISIONS

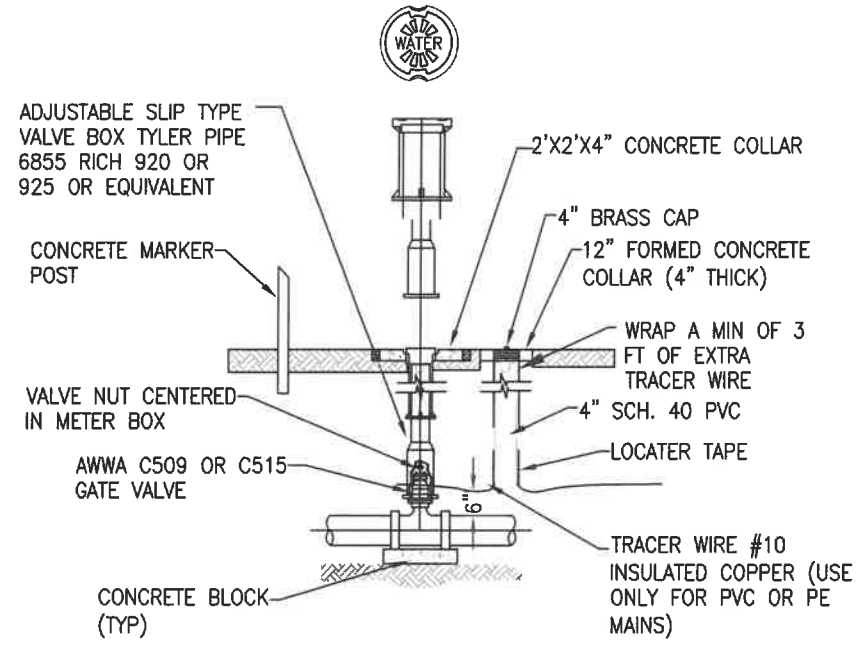
PORTLAND AREA
OFFICE OF ENVIRONMENTAL
HEALTH & ENGINEERING
SANITATION FACILITIES CONSTRUCTION
528 E. SPOKANE FALLS BLVD., SUITE#302
SPOKANE, WA 99201
(509) 455-3525



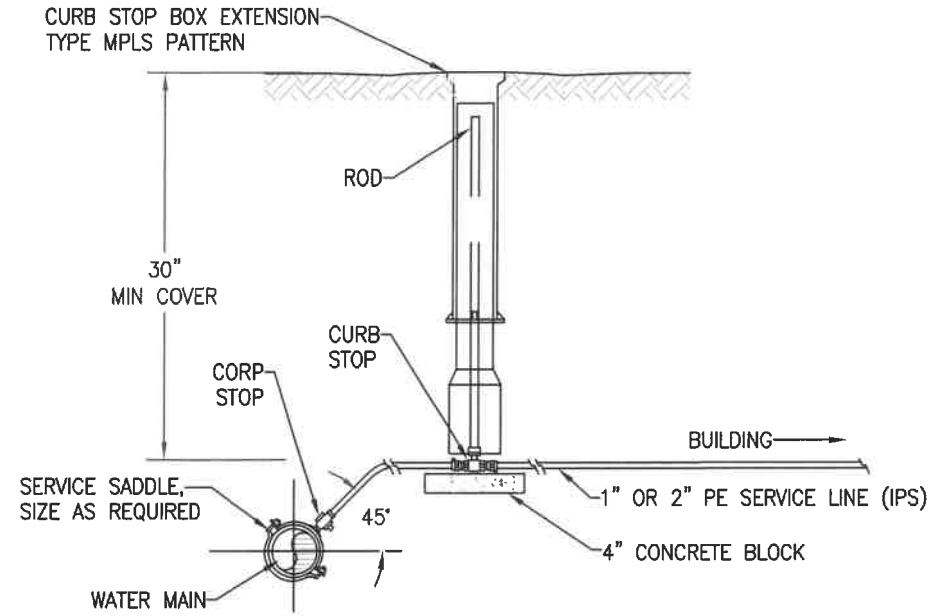
MISCELLANEOUS CONNECTION DETAILS
KOOTENAI INDIAN RESERVATION - BONNERS FERRY, IDAHO
KOOTENAI COMMUNITY WATERMAIN LOOP
PUBLIC LAW 86-121
PO-21-N04
DRAWN BY: RK PULLIN (02/27/24) FILE NAME: 21-N04 KOOTENAI WL(FINAL)
CHECKED BY: J DePASION LAYOUT NAME: 21-N04_CONN_DET
APPROVED BY: B. CHADWICK PROJ. ENG. SCALE: NONE

SHEET
6 OF 8

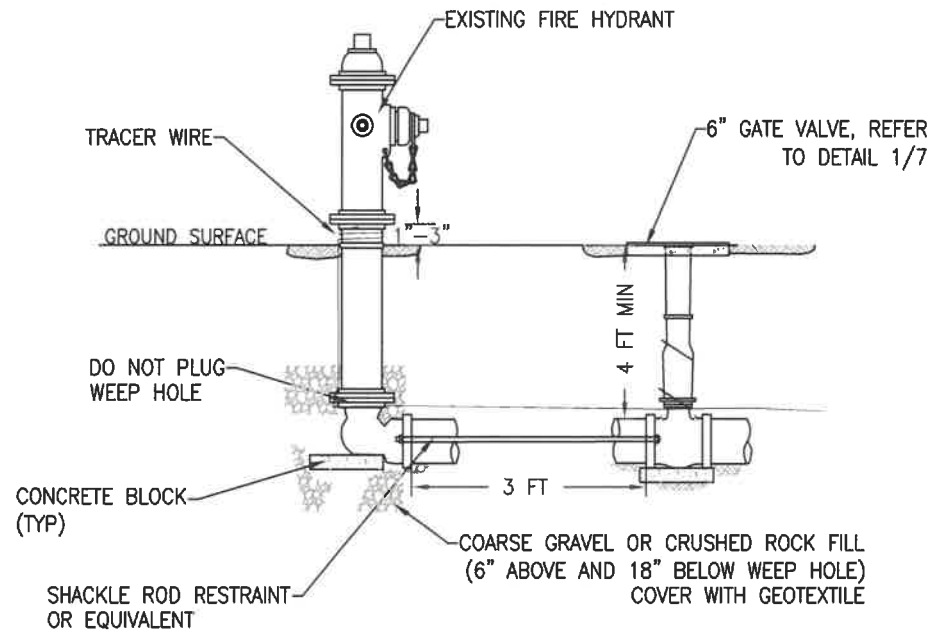
USER: KPullin FILE: K:\CAD Center\H-KOOTENAI PROJECT DRAWINGS\21-N04 - Kootenai Water Loop\1-Plans_Design\21-N04 Kootenai WL(FINAL).dwg 2/27/2024 - 9:27am



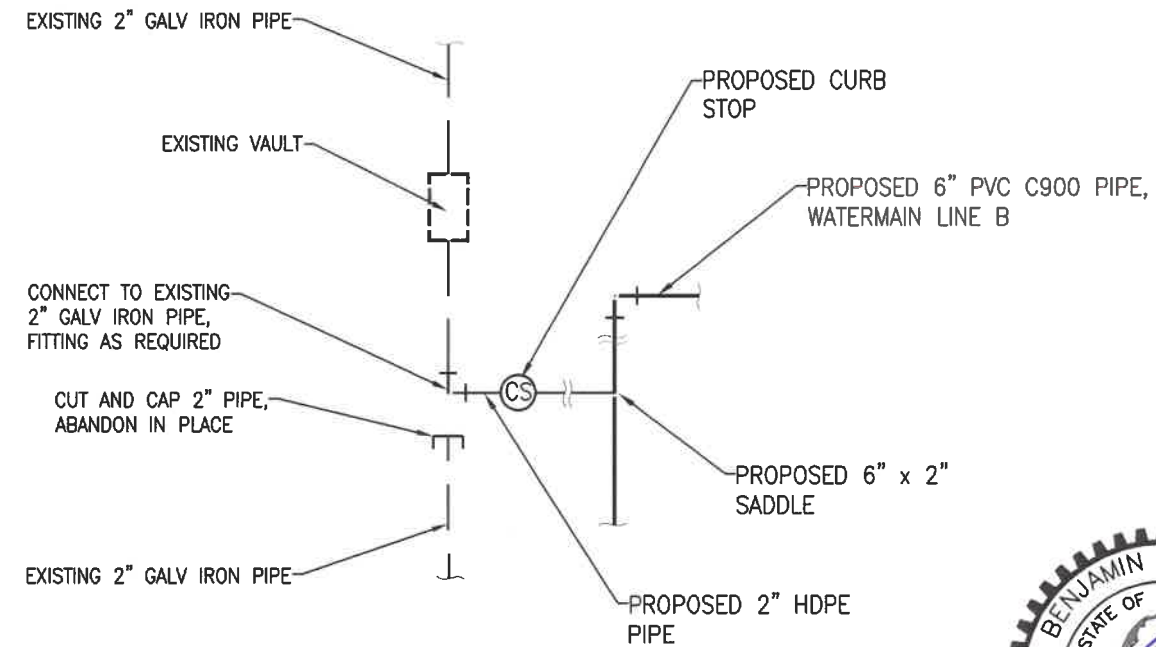
① GATE VALVE
N.T.S.



② WATER SERVICE CONNECTION DETAIL
N.T.S.



③ FIRE HYDRANT
N.T.S.



④ CONNECTION DETAIL @ 2" SERVICE LINE
N.T.S.



EXPIRES 03/25/2025

DATE	REVISIONS	INIT.

PORTLAND AREA
OFFICE OF ENVIRONMENTAL
HEALTH & ENGINEERING

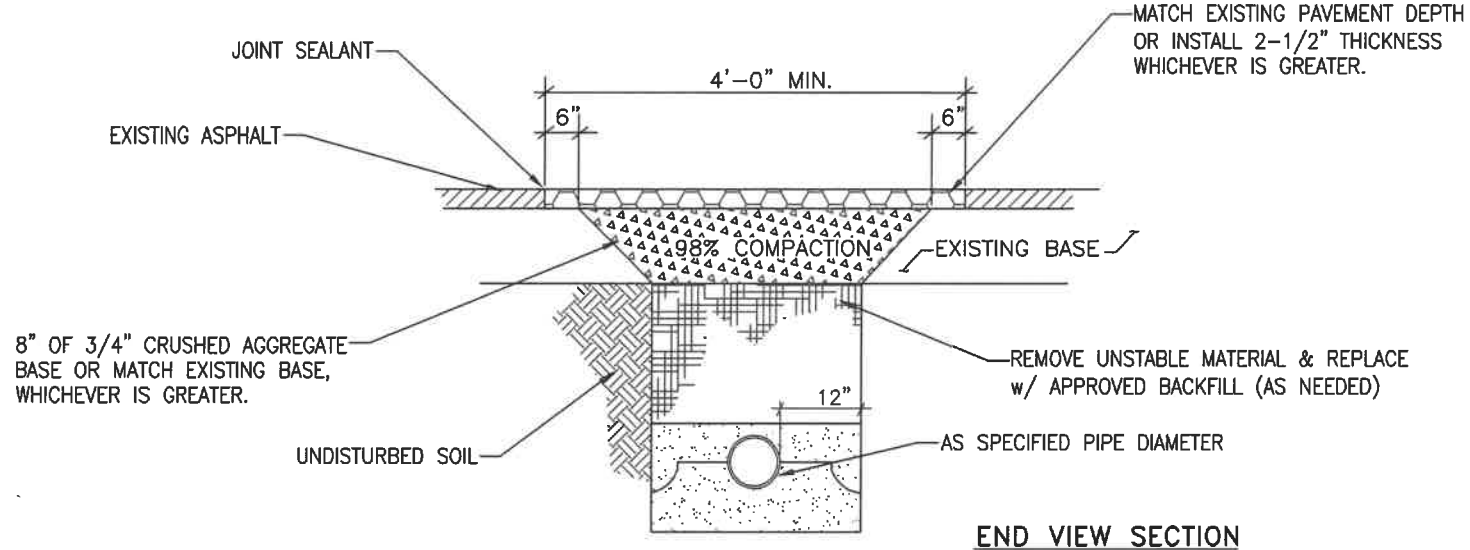
SANITATION FACILITIES CONSTRUCTION
528 E. SPOKANE FALLS BLVD., SUITE#302
SPOKANE, WA 99201
(509) 455-3525



STANDARD DETAILS - SHEET 1
KOOTENAI INDIAN RESERVATION - BONNERS FERRY, IDAHO
KOOTENAI COMMUNITY WATERMAIN LOOP
PUBLIC LAW 86-121
PO-21-N04

DRAWN BY: RK PULLIN (02/27/24) FILE NAME: 21-N04 KOOTENAI WL(FINAL)
CHECKED BY: J DePASION LAYOUT NAME: 21-N04 STD DET 1
APPROVED BY: B CHADWICK PROJ ENG: SCALE: NONE

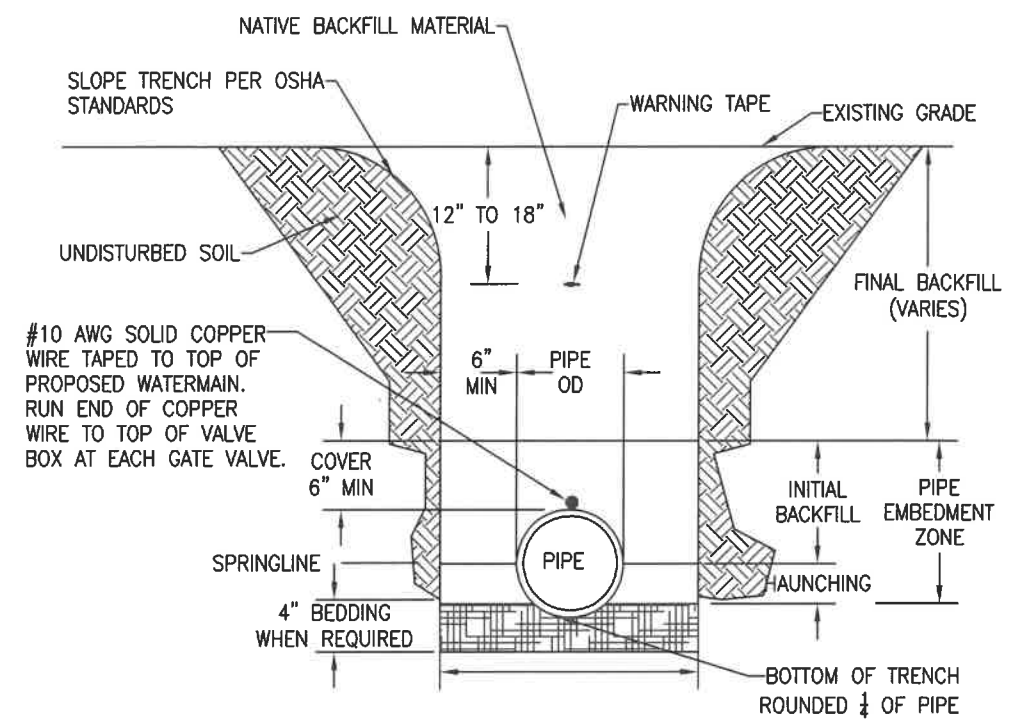
USER: KPullin FILE: K:\CAD Center\H-KOOTENAI PROJECT DRAWINGS\21-NO4 - Kootenai Water Loop\1-Plans_Design\21-NO4 Kootenai WL(FINAL).dwg 2/27/2024 - 9:27am



END VIEW SECTION

- NOTES:
- 1) ASPHALT THICKNESS: 2 1/2" THICK ON RESIDENTIAL STREETS AND 3" THICK ON COLLECTORS AND ARTERIAL STREETS.
 - 2) GRAVEL BASE THICKNESS: 8" THICKNESS OF 3/4" MINUS CRUSHED AGGREGATE BASE (MINIMUM) OR MATCH EXISTING BASE, WHICHEVER IS GREATER.
 - 3) TRENCH CUT BACK: APPROXIMATELY 1-1/2:1 SLOPE OR FLATTER (TYP). MINIMUM DEPTH OF 8" OR MATCH EXISTING GRAVEL SECTION OR MAXIMUM DEPTH OF 2.0 FEET.
 - 4) ASPHALT CUTS: ALL CUTS SHALL BE IN A NEAT STRAIGHT LINE (TYP).
 - 5) ALL WORK SHALL BE IN ACCORDANCE WITH IDAHO STANDARDS FOR PUBLIC WORKS CONSTRUCTION STANDARD DRAWING SD-301 SEE SPECIFICATION 340513.

1/8 TYPICAL ASPHALT RESURFACING DETAIL
N.T.S.



2/8 TRENCH DETAIL (SUITABLE SOILS)
N.T.S.



EXPIRES 03/25/2025

INIT.	DATE	REVISIONS

PORTLAND AREA
OFFICE OF ENVIRONMENTAL
HEALTH & ENGINEERING

SANITATION FACILITIES CONSTRUCTION
528 E. SPOKANE FALLS BLVD., SUITE #302
SPOKANE, WA 99201
(509) 455-3525



STANDARD DETAILS - SHEET 2
KOOTENAI INDIAN RESERVATION - BONNERS FERRY, IDAHO
KOOTENAI COMMUNITY WATERMAIN LOOP
PUBLIC LAW 86-121
PO-21-NO4

FILE NAME: 21-NO4 KOOTENAI WL(FINAL)
LAYOUT NAME: 21-NO4_STND DET 2

DRAWN BY: RK PULLIN (02/27/24)
CHECKED BY: J DePASION
APPROVED BY: B CHADWICK

PROJ ENG: SCALE: NONE